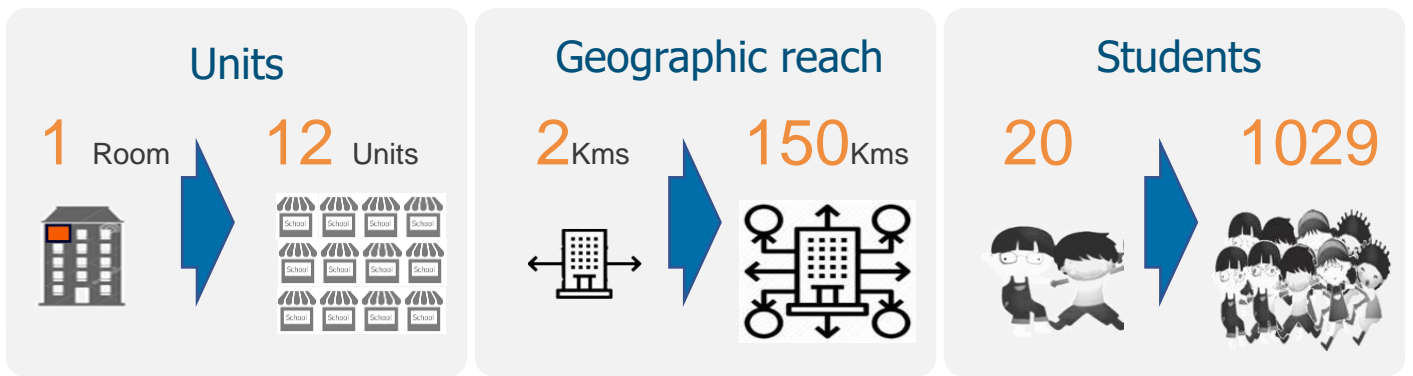




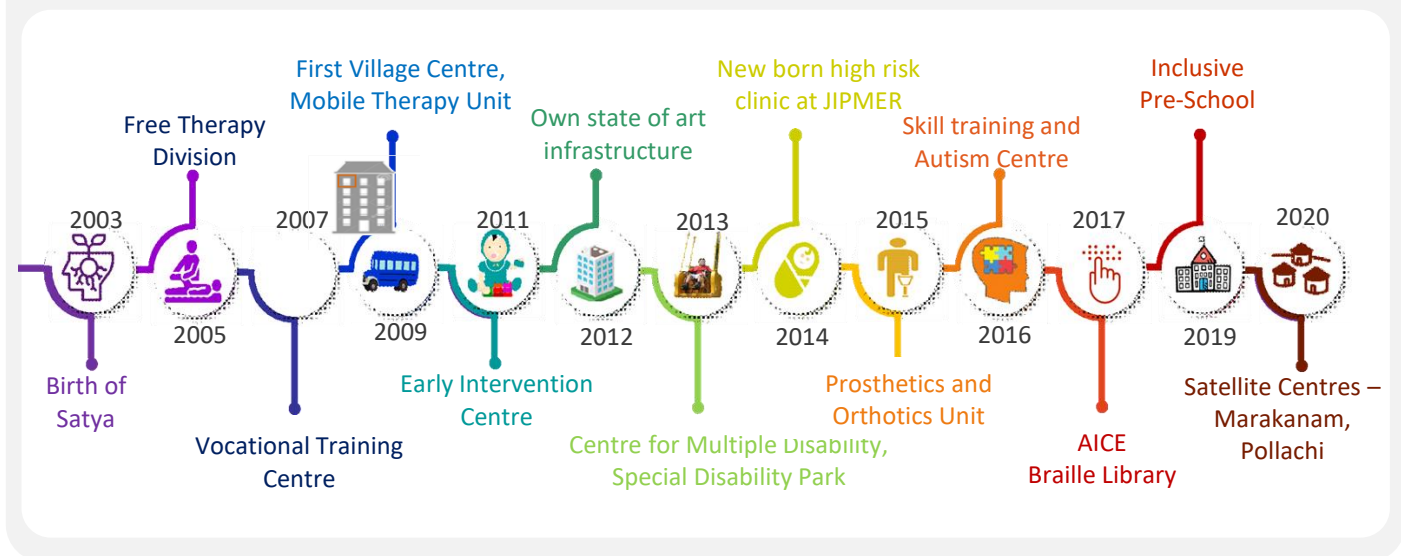
A Concept Note – Satya Special School

Satya Journey

Satya Special School was founded in 2003 by a group of like minded individuals with the aim to change the fragmented rehabilitation system for the disabled into a more integrated and holistic one. Over the years Satya has been improving the lives of CWSNs through individualized learning plans and therapeutic intervention. Growing from the humble beginnings of our work towards making social inclusion a reality in one room on the third floor of a clinic to 12 units including a special disability park and increasing our geographic coverage to 150 km radius, the Satya journey has been incredible and yet heart wrenching.



Key Milestones



Disability Management - From a fragmented rehabilitation system towards an integrated and holistic one

Towards an inclusive tomorrow

Satya Special School at a glance



What we do

Rehabilitation services with a focus on intellectual disability for children with special needs



Why we do it

Direct and indirect interventions towards inclusion of children with special needs in society



Direct Interventions

Academic and therapeutic intervention, Sports, recreational activities, art, music drama etc for children and young adults with special needs across ages (0-25)



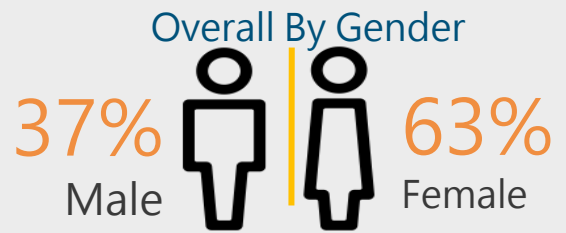
Work with stakeholders

Capacity building, awareness, advocacy, child rights and to support and facilitate livelihood for children with special needs

Towards an inclusive tomorrow

Staffing - a snapshot

160 people



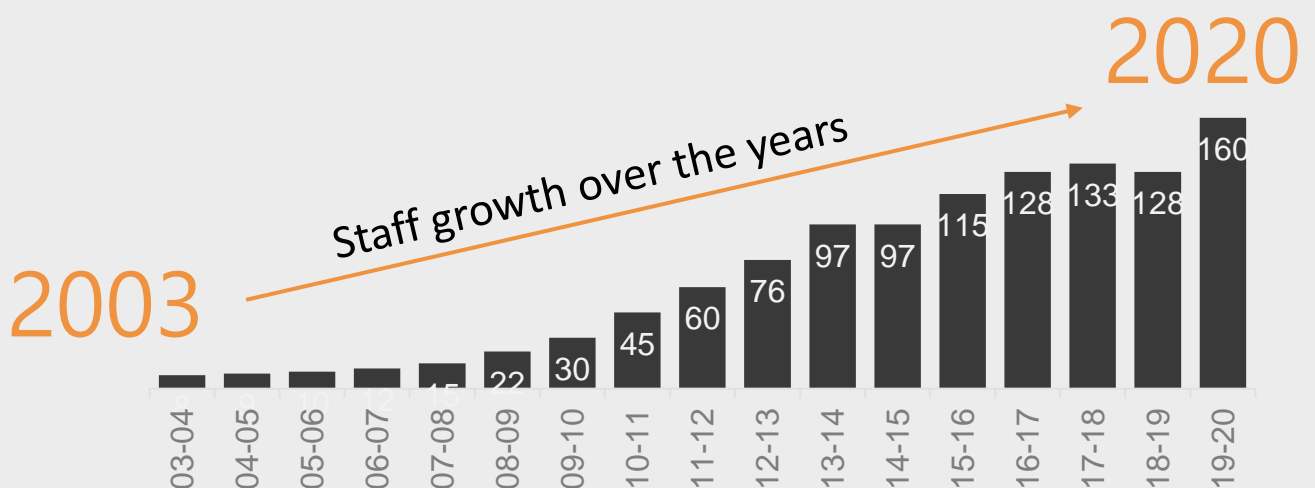
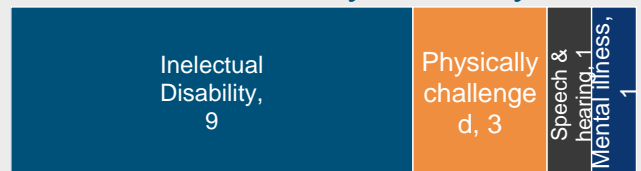
Overall Full-time/Part-time



10% PWDs



PWD staff by disability



Satya – Beneficiary



The Household

Rs. 100-150
Per day



Single income



Poor family
involvement



Access to Education

Mainstream
1-2 Km



Inclusive
None

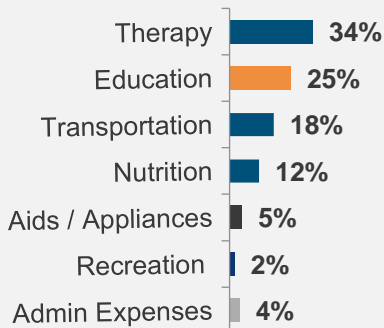


Social taboo | Low household income | Low awareness | Low independent mobility | Poor family involvement

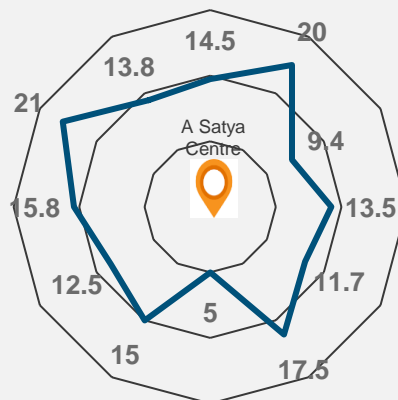
Education often eludes children with special needs...

The difference Satya makes

Average spends
Rs. 150 / per child
per day



Satya buses ply 5-25 Km one way to ensure no one is left behind



Satya will care for any child with disability visible or invisible

- Autism
- Cerebral Palsy
- Multiple Disability
- Downs Syndrome
- Mentally Retarded (MR)
- Slow Learners
- Children In Difficult Situations

Students details

1029 Semi urban

75% BPL

85% Free Services

48% Urban

13% Semi urban

39% Rural

Towards an inclusive tomorrow

Become a national leader in disability management practices

Satya Special School aims to become a leader in the disability management practices using a two pronged approach.

1. Develop best practices for a model inclusive school and replicate it through the BOT (build, operate and transfer) model
2. Develop the best practices for a model integrated village development program to promote inclusivity and sustainable integration for people with special needs

Model inclusive school

1. Operate 1 model school in Pondicherry along with process and complete documentation required to replicate the model by 2025
2. Identify 3 partners and pilot the model to refine the process. By 2026
3. Identify 7 more partners and implement the model by 2028
4. Complete integration with at least 6 partners by 2030

Model integrated village development program

1. Have 1 model village along with process and complete documentation required to replicate the model by 2030
2. Identify 1-2 more villages and pilot the model to refine the process.

To each according to his/her need



For more details please contact:

Name : Chitra Shah

Designation : Director

Email : director@satyaspecialschool.org

Mobile No : 9345454449
